

JRC SAW Filter For L5 GPS Applications

NJR
NEWS

2006

71

April 10, 2006

NSVS999 for L5 GPS

JRC SAW Filter for L5 GPS Applications

JRC is a leader in SAW Filters with over 60 patents for SAW/STW filter development And Flip-chip technology.

Applications

- GPS L5 satellite band

Features

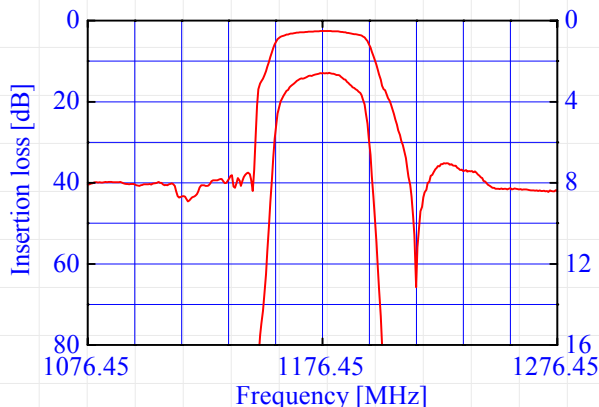
- Center frequency: 1176.45 MHz
- Insertion loss: 3.0 dB Typical
- Pass band: 20 MHz
- Attenuation:
 - 35 dB at ± 55 MHz
- Maximum input power: +20 dBm
- Maximum DC Voltage: 7.5 V
- Small Temperature Deviation
- Operating Temperature Range: -30°C to +85°C
- Package: 3.0x3.0x1.15mm³

NOW Available !

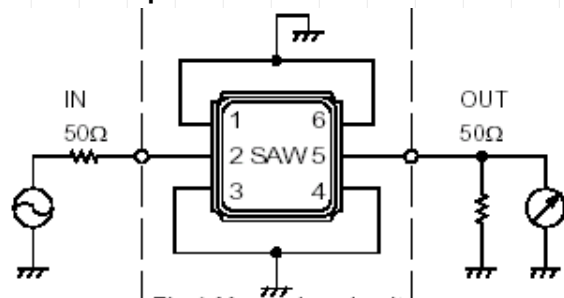
Electrical Specifications

Item	Spec.	Typical
Input and output Impedance	-	50 Ohms
Nominal Center Frequency (f_0)	-	1176.45 MHz
Insertion Loss	1166~1187MHz	3.5 dB max. 3.0 dB
Response Variation	1166~1187MHz	1.5 dB max. 1.0 dB
Input and output VSWR	1429~1453MHz	2.0 max. 1.5
Out of Band Rejection (Relative to Through Level)	1121.45MHz	30 dB min. 40 dB
	1231.45MHz	30 dB min. 35 dB

Application Characteristics



Electrical Specifications Measurement Circuit



Package Dimensions

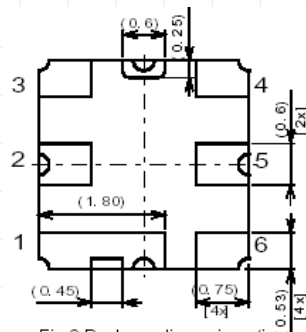


Fig. 2 Package dimensions (mm)



NJR CORPORATION

A SUBSIDIARY OF NEW JAPAN RADIO COMPANY, LTD.

198 Stauffer Blvd. San Jose, CA 95125

NJR CORPORATION offers Bipolar ICs, CMOS ICs, BiCMOS ICs and GaAs MMICs as well as Saw filters and Microwave Doppler Modules, covering North and South America to provide technical assistance and quick delivery for achieving customer satisfactions. For further information, please contact:

PHONE : (408) - 995-6200, (866) NJR-CORP or WWW.NJR.COM

The World's Best Source for High Quality ICs using Bipolar, CMOS, BiCMOS, GaAs MMICs, as well as Saw filters & Microwave Sensors