

JRC SAW Filter For L2 GPS Applications

NJR
NEWS

2006

70

April 7, 2006

NSVS1108 for L2 GPS

JRC SAW Filter for L2 GPS Applications

JRC is a leader in SAW Filters with over 60 patents for SAW/STW filter development And Flip-chip technology.

Applications

- GPS L2 satellite band

Features

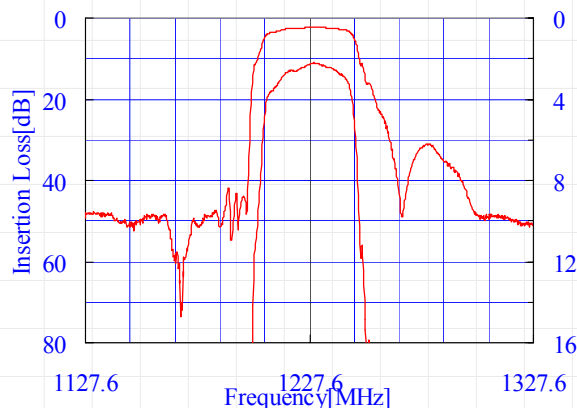
- Center frequency: 1227.6 MHz
- Insertion loss: 3.1 dB Typical
- Pass band: 20 MHz
- Attenuation:
 - 35 dB at ± 55 MHz
- Maximum input power: +20 dBm
- Maximum DC Voltage: 7.5 V
- Small Temperature Deviation
- Operating Temperature Range: -40°C to +85°C
- Package: 3.0x3.0x1.15mm³

NOW Available!

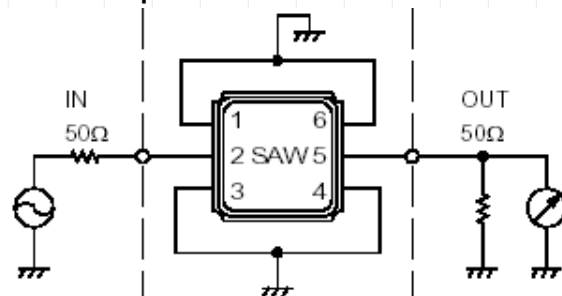
Electrical Specifications

| Item | Spec. | Typical | |
|--|------------------|-------------|--------|
| Input and output Impedance | - | 50 Ohms | |
| Nominal Center Frequency (f_0) | - | 1227.6 MHz | |
| Insertion Loss | 1217.6~1237.6MHz | 3.7 dB max. | 3.1 dB |
| Response Variation | 1217.6~1237.6MHz | 1.5 dB max. | 1.0 dB |
| Input and output VSWR | 1217.6~1237.6MHz | 1.5 max. | 2.0 |
| Out of Band Rejection (Relative to Through Level) | DC~1088MHz | 40 dB min. | 45 dB |
| | 1088~1178MHz | 35 dB min. | 40 dB |
| | 1178~1193MHz | 17dB min. | 42 dB |
| | 1263~1278MHz | 18dB min. | 45 dB |
| | 1278~1368MHz | 30 dB min. | 38 dB |
| | 1368~1785MHz | 35 dB min. | 40 dB |
| | 1785~2500MHz | 27 dB min. | 35 dB |
| | 2500~4000MHz | 20 dB min. | 30 dB |

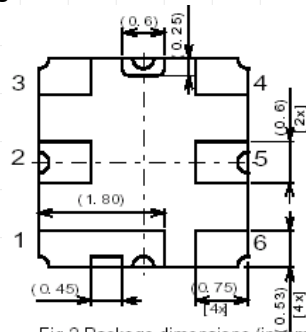
Application Characteristics



Electrical Specifications Measurement Circuit



Package Dimensions



NJR CORPORATION

A SUBSIDIARY OF NEW JAPAN RADIO COMPANY, LTD.

198 Stauffer Blvd. San Jose, CA 95125

NJR CORPORATION offers Bipolar ICs, CMOS ICs, BiCMOS ICs and GaAs MMICs as well as Saw filters and Microwave Doppler Modules, covering North and South America to provide technical assistance and quick delivery for achieving customer satisfactions. For further information, please contact:

PHONE : (408) - 995-6200, (866) NJR-CORP or WWW.NJR.COM