

JRC SAW Filter For L1 GPS Applications

NJR
NEWS

2006 **69**

April 5, 2006

NSVS1144 for L1 GPS

JRC SAW Filter for L1 GPS Applications

JRC is a leader in SAW Filters with over 60 patents for SAW/STW filter development And Flip-chip technology.

Applications

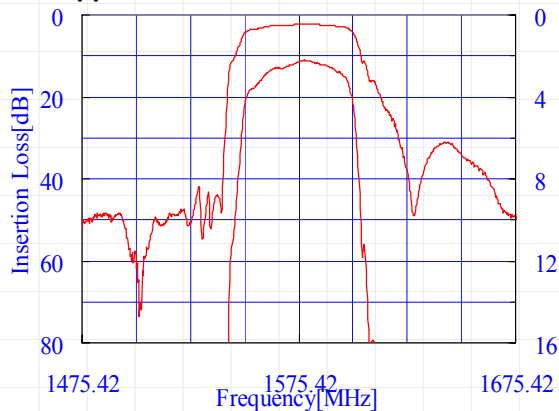
- GPS L1 satellite band

Features

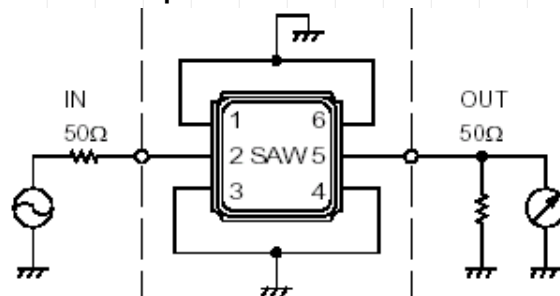
- Center frequency: 1575.42 MHz
- Insertion loss: 3.0 dB Typical
- Pass band: 20 MHz
- Attenuation:
 - 25 dB at ± 50 MHz
 - 45 dB at ± 100 MHz
- Maximum input power: +20 dBm
- Maximum DC Voltage: 7.5 V
- Small Temperature Deviation
- Operating Temperature Range: -40°C to +85°C
- Package: 3.0x3.0x1.15mm³

NOW Available!

Application Characteristics



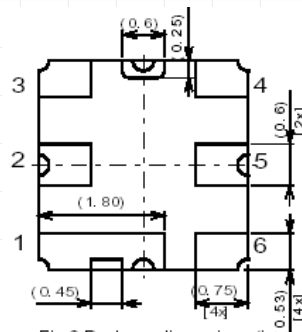
Electrical Specifications Measurement Circuit



Electrical Specifications

| Item | Spec. | Typical |
|--|--------------------|------------------|
| Input and Output Impedance | - | 50Ω |
| Nominal Center Frequency (f ₀) | - | 1575.42MHz |
| Insertion Loss | 1565.42~1585.42MHz | 3.7dB max. 3.1dB |
| Response Variation | 1565.42~1585.42MHz | 1.5dB max. 1.0dB |
| Input and Output VSWR | 1565.42~1585.42MHz | 1.5 max. 2.0 |
| Out of Band Rejection (Relative to Through Level) | DC~1475.42MHz | 40dB min. 50dB |
| | 1525.42MHz | 35dB min. 40dB |
| | 1625.42MHz | 20dB min. 35dB |
| | 1675.42~3000MHz | 35dB min. 45dB |

Package Dimensions



NJR CORPORATION

A SUBSIDIARY OF NEW JAPAN RADIO COMPANY, LTD.

198 Stauffer Blvd. San Jose, CA 95125

NJR CORPORATION offers Bipolar ICs, CMOS ICs, BiCMOS ICs and GaAs MMICs as well as Saw filters and Microwave Doppler Modules, covering North and South America to provide technical assistance and quick delivery for achieving customer satisfactions. For further information, please contact:

PHONE : (408) - 995-6200, (866) NJR-CORP or WWW.NJR.COM